



December 23, 2019

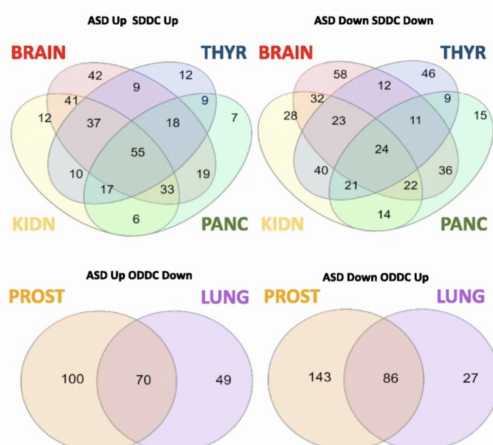
## Message from David Amaral, Director of Autism BrainNet

During the holidays our thoughts turn to families. We want to extend holiday well wishes to all of the families that we have met while spreading our message about the need for postmortem brain donations. The holidays are also a time of hope. It is our hope that by studying postmortem brains we will understand the mysteries of autism. And, by doing so, will advance new treatments that will improve the quality of life of autistic individuals.

On behalf of all of the Autism BrainNet team, I wish you a joyous holiday and a wonderful start to 2020 - a new year and a new decade.

## SCIENCE

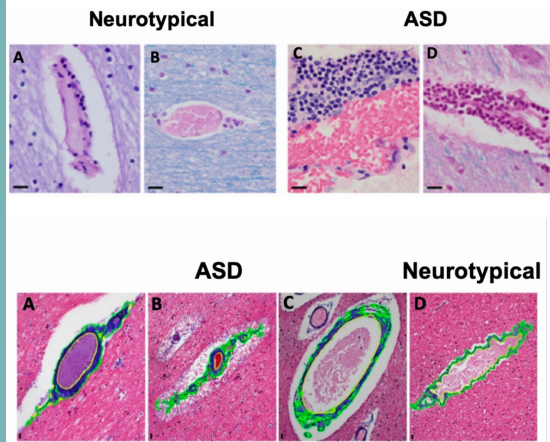
### Meta-analysis of brain and tumor tissue studies highlights overlap between autism and cancer



The results from a new study suggest that ASD and several types of cancer shared similar patterns of increased or decreased activity in 100-200 genes. Shedding light on the biological pathways involved in these changes may have important implications for better understanding ASD mechanisms and developing treatments.

[Read more about this finding here.](#)

# New study finds excess of T-lymphocytes in the brain of individuals with autism



Thanks to the gift of postmortem brain tissue donated to Autism BrainNet, new research by Director of Autism BrainNet Boston node Matthew Anderson provides first evidence of immune response targeting brain cells in autism.

[Read more about this research here.](#)

## MEET OUR TEAM



We recently spoke with Matthew Anderson, M.D., Ph.D., Director of Autism BrainNet Boston node, to learn more about his role with Autism BrainNet, the importance of studying postmortem brain tissue, and his latest research on the autism postmortem brain.

[Read the interview here.](#)

## HOTLINE

**Contact us, we are here to help.**



If you have questions about Autism BrainNet and the donation process, email us at:

[info@autismbrainnet.org](mailto:info@autismbrainnet.org)

If you have questions about making a donation, call our 24 hour hotline:

**1-877-333-0999**

## COMMUNITY EVENTS

## Thanks for visiting

Thanks to all the individuals and families that came out to support the autism community and learn more about Autism BrainNet.



Many families and individuals signed up to learn more about brain research at the Autism Speaks walks in Boston, MA, Houston, TX, and Phoenix, AZ.



Autism BrainNet attended the National Association of Medical Examiners annual meeting held in Kansas City, MO to raise awareness about partnering for autism research. Pictured here is Kelly Gleason, Tissue Coordinator for Autism BrainNet at the UT Southwestern site.

STAY CONNECTED



<https://autismbrainnet.org> | <https://takesbrains.org>